



*jordan fishwick*

1 Warren Hey, SK9 2NQ  
Guide Price £189,950





## Warren Hey Wilmslow SK9 2NQ

Guide Price £189,950



Take a look at this beautifully presented one bedroom quartz/maisonette property with a private garden and off road parking, offering an ideal buy to let opportunity or starter home. The property is conveniently situated within easy reach of Wilmslow town centre with its excellent range of shops and general services, restaurants and wine bars. For the commuter Wilmslow railway station is on the main line to London Euston and also provides a regular commuter service to Manchester and surrounding districts. Access to the North West motorway network is within a short drive as is Manchester International Airport. The A34 Wilmslow by-pass is within easy reach and provides access to the superstores at Handforth Dean and Cheadle Royal and thereon to the business centres of Manchester and Stockport. The property comprises in brief, a private entrance hallway with handy storage cupboard, a ground floor double bedroom with feature fitted wardrobes and family shower room that offers a walk in shower enclosure, low level WC and pedestal hand wash basin. To the first floor a refitted modern kitchen with tasteful blue coloured wall and base fitted units, incorporating a handful of integrated appliances. Key appliances include an induction hob and good size fridge freezer. The living/dining space offers a great social area with adaptability for all needs, with feature box bay window to the rear aspect overlooking the garden. Externally the property offers off road parking for multiple vehicles as well as a private rear garden that provides a low maintenance space with patio and lawn. Viewings Essential.







- Quartz property
- Ground Floor One bedroom
- Open Living Dining Area
- Off road parking
- Private garden to the rear
- Great Location
- Shower Room



Energy Efficiency Rating

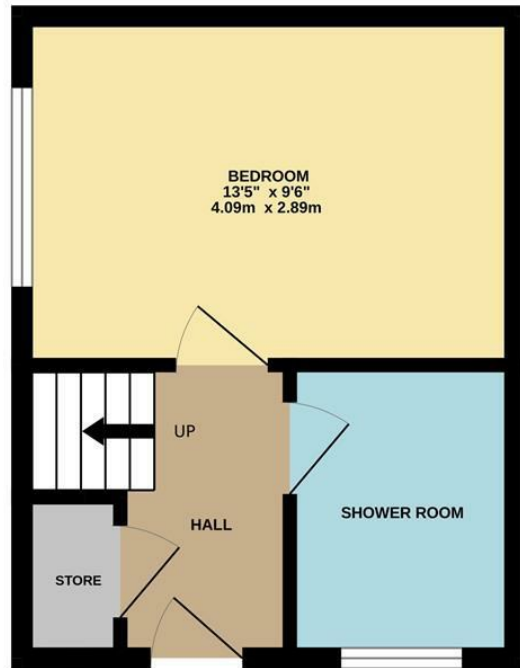
	Current	Potential
Very energy efficient - lower running costs		
(92 plus) <b>A</b>		
(81-91) <b>B</b>		89
(69-80) <b>C</b>	71	
(55-68) <b>D</b>		
(39-54) <b>E</b>		
(21-38) <b>F</b>		
(1-20) <b>G</b>		
Not energy efficient - higher running costs		

England & Wales

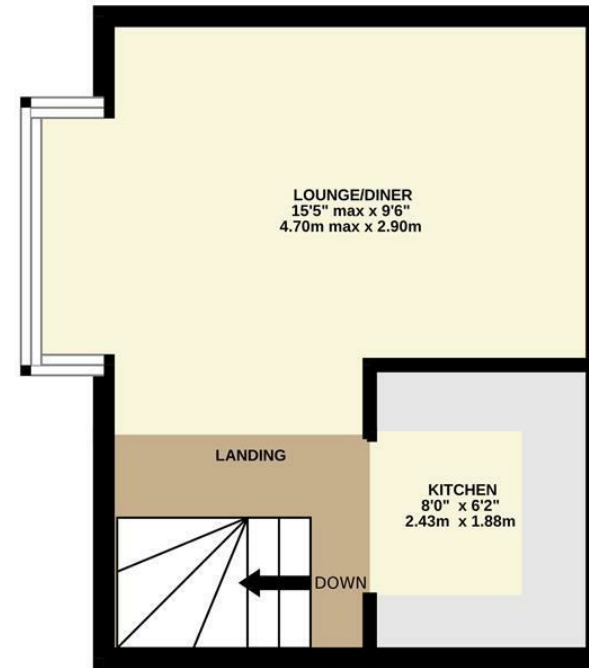
EU Directive  
2002/91/EC



GROUND FLOOR



1ST FLOOR



Measurements are approximate. Not to scale. Illustrative purposes only  
Made with Metropix ©2025



These particulars are believed to be accurate but they are not guaranteed and do not form a contract. Neither Jordan Fishwick nor the vendor or lessor accept any responsibility in respect of these particulars, which are not intended to be statements or representations of fact and any intending purchaser or lessee must satisfy himself by inspection or otherwise as to the correctness of each of the statements contained in these particulars. Any floorplans on this brochure are for illustrative purposes only and are not necessarily to scale.

Offices at: Chorlton, Didsbury, Disley, Hale, Glossop, Macclesfield, Manchester Deansgate, Manchester Whitworth Street, New Mills, Sale, Wilmslow and Withington

36-38 Alderley Road, Wilmslow SK91JX

**01625 532000**

[wilmslow@jordanfishwick.co.uk](mailto:wilmslow@jordanfishwick.co.uk)

[www.jordanfishwick.co.uk](http://www.jordanfishwick.co.uk)